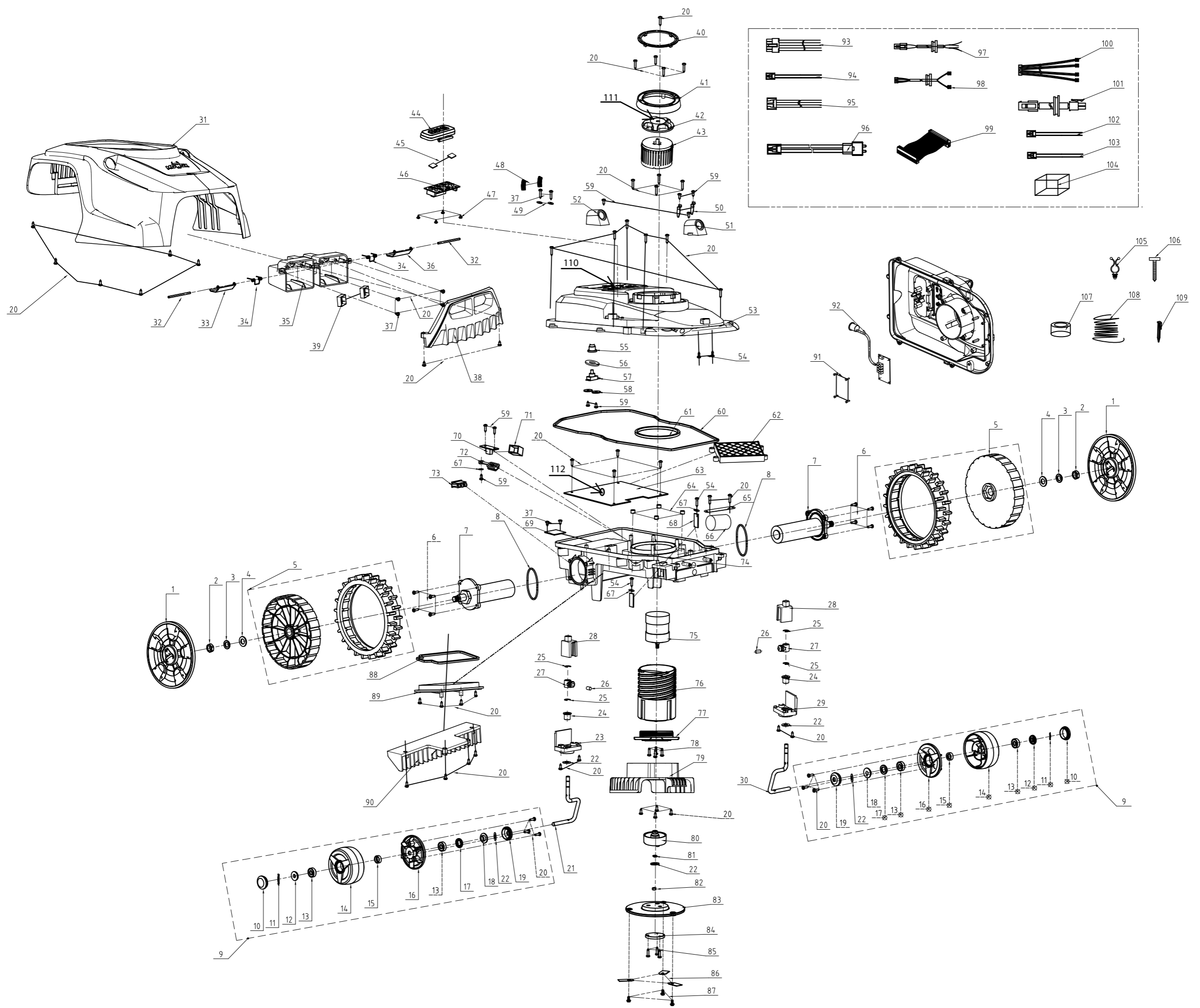




Silaro™ RM 1000 WiU-SN

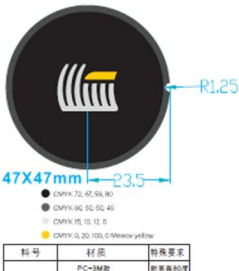





in sketch	part number	other number of same part	part description	Qty	remarks
1	21211000514159A		- Rear wheel cover	2	
2	3031307004		- Hex thin nut M10	2	
3	A26800700601	26800700601	Flat washer	2	
4	A26800800101	26800800101	Spring washer	2	
5	21211000460001B		- Rear wheel ass'y	2	
6	A26800102801	26800102801	ST screw 4*22	8	
7	2050000007A		- Driving motor	2	
8	31216020050145		- O-ring 60*2.65	2	
9	2120200018		- Front wheel assy	2	
10	21211000030001A		- Outer cover	2	
11	3049301002		- Bearing clip $\varnothing 8 * 0.5$	2	
12	21211000050001A		- Outer cover of front wheel bearing	2	
13	A26800408601	26800408601	Ball bearing	4	
14	21211000530001A		- Front wheel hub	2	
15	2121600002A		- Water-proof rubber	2	
16	21211000540001A		- Front wheel cover	2	
17	3121601001		- Oil sealing ring	2	
18	21211000060001A		- Inner cover of front wheel bearing	4	
19	21211000040001A		- Inner cover of front wheel	4	
20	A26800100501	26800100501	ST screw 4*16	49	
21	2121300011A		- Front wheel axle(left)	1	
22	3051303001		- Washer 8	4	
23	21211000570001A		- Bearing block (left)	1	
24	2123400001A		- Oil bearing	2	
25	A26800900101	26800900101	Split washer	4	
26	2129900004B		- Cylinder magnet	2	
27	21211000560001A		- Sliding part	2	
28	21211000550001A		- Link stopper	2	
29	21211000580001A		- Bearing block (right)	1	
30	2121300010A		- Front wheel axle(right)	1	
31	21241000464164A		- Outer Shell	1	
32	2124300003A		- Rotation shaft of charging contact plate	2	
33	2128300005A		- Charging contact plate(upper)	1	
34	2129200002A		- torsion spring	2	
35	21231000260103A		- Charging plate	1	
36	2128300004A		- Charging contact plate(lower)	1	
37	A26800103102	26800103102	ST screw	6	
38	21241000480120A		- Front protection cover	1	
39	2120200005B		- Inductive plate assembly	2	
40	21241000324161A		- Height adjustment display board	1	
41	21241000310001A		- Height adjustment pressing board	1	
42	21241000294163A		- Height adjustment knob	1	
43	21261000160001A		- Knob body	1	
44	21261000100002B		- Stop button	1	
45	2126100011A		- Display clamp	2	
46	2108900139B		- PCB key	1	
47	3011301016		- ST screw 3*6	4	
48	2109800122A	26801126601	Spring	2	
49	A26800701001	26800701001	Flat washer	5	
50	2126300002C	2126300002B	Paddle	2	
51	21241000490001A		- Ultrasonic left supprot	1	
52	21241000500001A		- Ultrasonic right supprot	1	
53	21241000470121A		- Upper cover	1	
54	2109300058A		- ST screw	2	
55	2126600002A		- Rubber cover of stop switch	1	
56	A26800704601	26800704601	Flat washer	1	
57	2126900003A		- Stop switch	1	
58	2109200040A	26300143601	Pressing plate	2	
59	3011301009		- ST screw 4*12	9	
60	2123600001C		- Strip seal of deck	1	
61	2126600001B		- Sealing ring of tread sleeve	1	
62	21231000290001A		- Airtight box	1	
63	2128900107A		- Mother board	1	
64	2129600002C		- Rubber bushing	4	
65	2123200002A		- Pressing plate	1	



in sketch	part number	other number of same part	part description	Qty	remarks
66	2123300008A		- Clump weight	1	Passive weight. Do not order.
67	A26800700502	26800700502	Washer	3	
68	2128900022A		- Hall PCB ass'y	2	
69	2128900119A		- Perimeter sensor detection plate	1	
70	2128900051B	2128900051A	USB plate	1	
71	2123600007A		- USB sealing element	1	
72	2128600004A		- USB sealing element	1	
73	2126900002A		- Rocker switch	1	
74	21231000230001A		- Deck	1	
75	2050100280A		- Cutting motor	1	
76	21291000250001A		- Thread sleeve	1	
77	21291000260001A		- Thread sleeve	1	
78	3022301010		- Screw M4*14	4	
79	21231000250001A		- Protection cover	1	
80	2125400001A		- Blade adaptor	1	
81	2125300012A		- Square hole washer	1	
82	3032306001	A26800502401	All metal hex locking nut M6	1	
83	21251000030001C		- Blade disk	1	
84	2125300010A		- Cutter cover	1	
85	3021302017		- Tooth screw M4*12	3	
86 - 87	ARM 3 BLA SET		- 3 blades & 3 screws	1	order at Daye Europe GmbH
88	2128600006A		- Sealing ring of battery	1	
89	21231000240001A		- Cover board of battery	1	
90	21231000210001A		- Guard plate	1	
91	A26800103502	26800103502	ST screw	4	
92	2120200014A		- Ultrasonic ass'y	1	
93	2128900086A		- Battery connector	1	
94	2128900009C		- Switch stop connector	1	
95	2128900110A		- USB connector	1	
96	2128900085A		- Rain sensor connector	1	
97	2128900087A		- Charging contact plate connector	1	
98	2128900089A		- Perimeter connector	1	
99	2129900011A		- FC connector	1	
100	2128900088A		- Obstruction sensor connector	1	
101	2128900105A		- Cutting motor connector	1	
102	2128900111A		- Perimeter sensor connector	1	
103	2128900090A		- Ultrasonic connector	1	
104	BA 515		- Battery pack	1	order at Daye Europe GmbH
105	2129100034A		- Cable holder	10	
106	2013900094	29000400101	Nylon cable ties	3	
107	2129900044A		- Magnetic ring	1	
108 - 109	ARM 5 REP SET		- 5 m boundary wire, 5 cable connectors & 10 pegs	1	order at Daye Europe GmbH
108 - 109	ARM 100 EXT SET		- 100 m boundary wire, 5 cable connectors & 125 pegs	1	order at Daye Europe GmbH
110			- keyboard sticker Silaro	1	Order with picture.
111			- height adjustment logo	1	Needed on every disassembly of the robot. Order with picture. Similar, but not identical part has no. 78500974301.



in sketch	part number	other number of same part	part description	Qty	remarks
112			- CMOS button cell CR 2032	1	