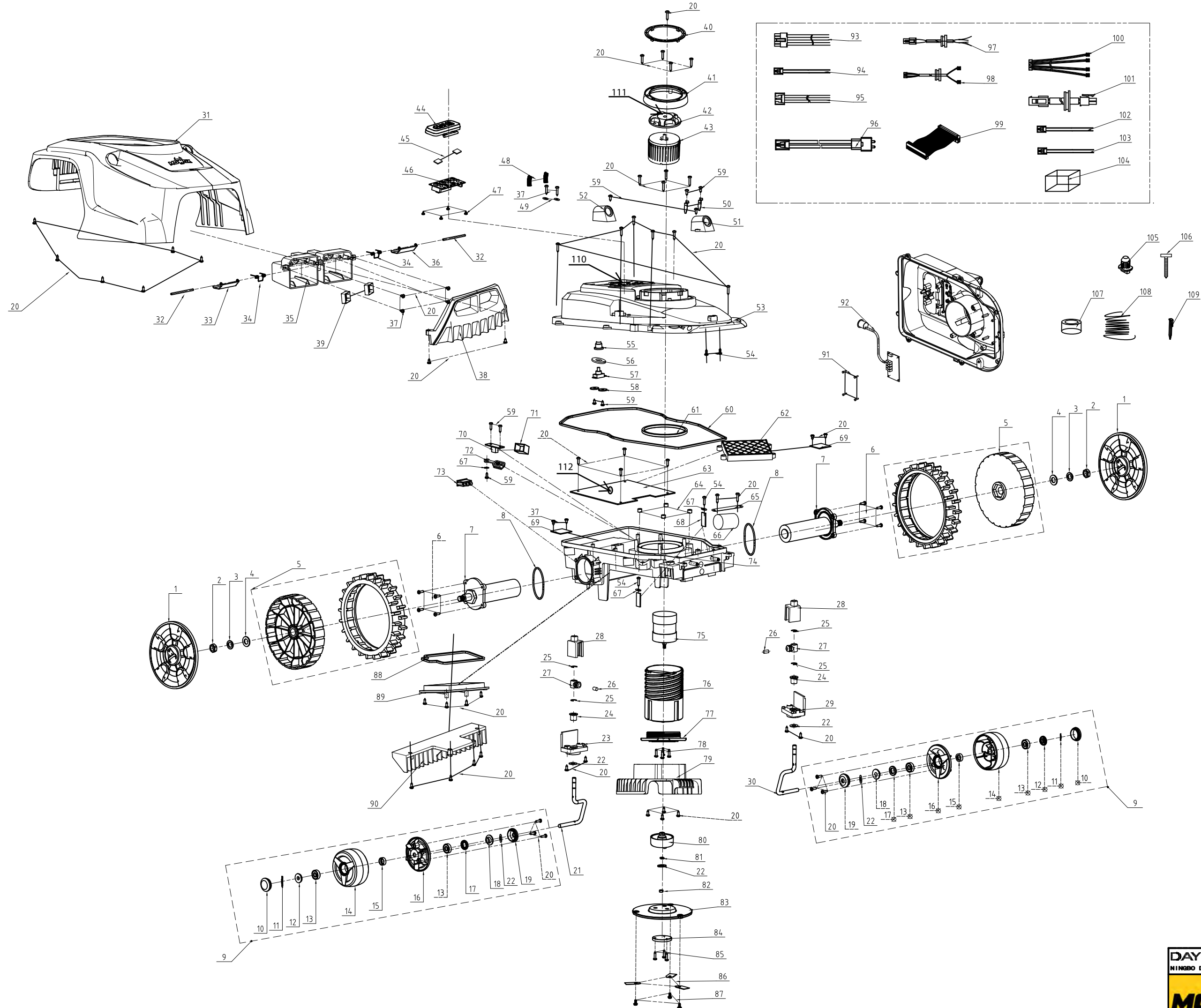


# RM 750 BTU-SN




- 750 m<sup>2</sup>
- Bluetooth only
- Ultrasound sensors

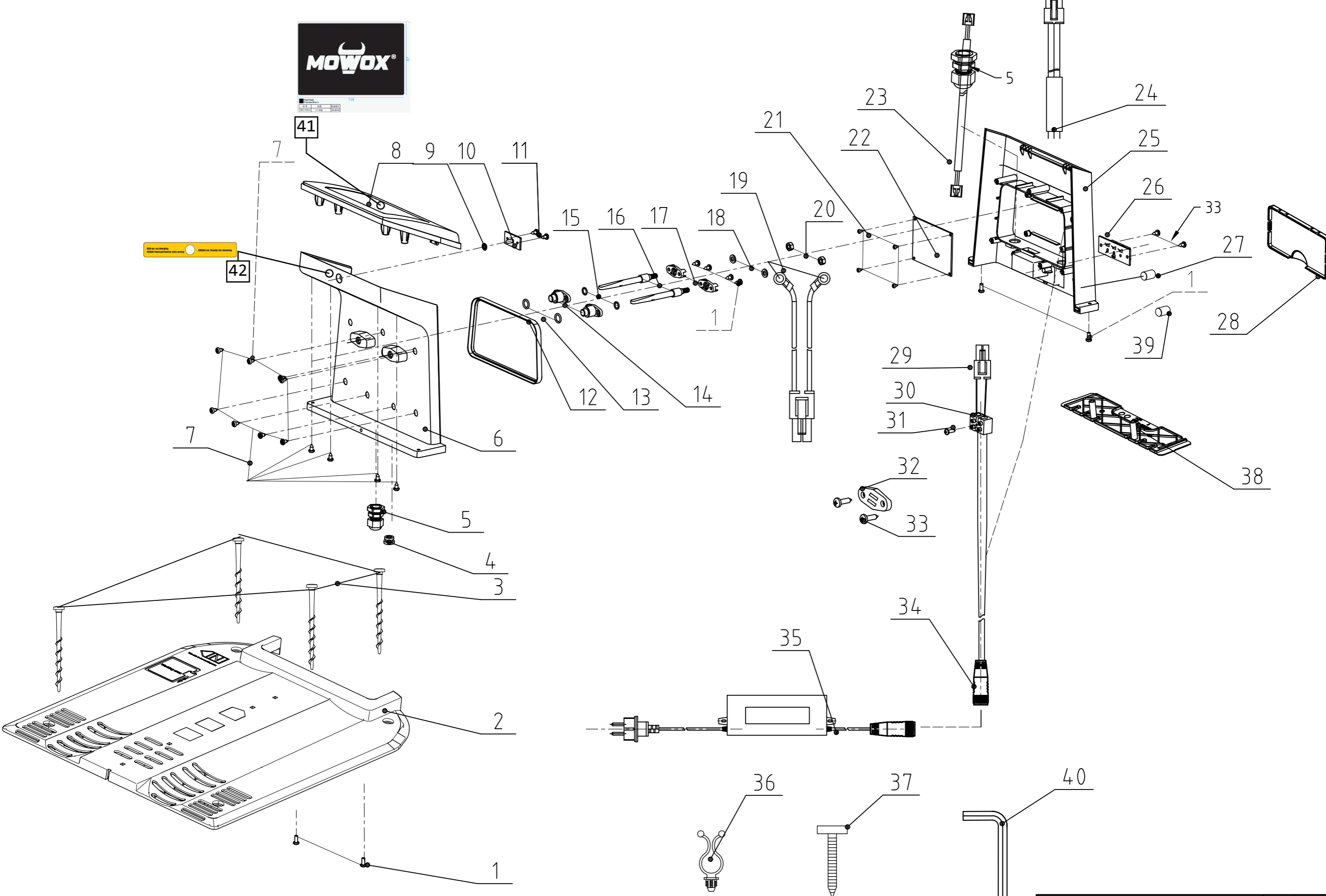


in sketch	part number	other number of same part	part description	Qty	remarks
1	21211000514159A	21211000514111A	Rear wheel cover	2	
2	3031307004		- Hex thin nut M10	2	
3	A26800700601	26800700601	Flat washer	2	
4	A26800800101	26800800101	Spring washer	2	
5	21211000460001B		- Rear wheel ass'y	2	
6	A26800102801	26800102801	ST screw 4*22	8	
7	2050000007A		- Driving motor	2	
8	31216020050145		- O-ring 60*2.65	2	
9	21202000018		- Front wheel assy	2	
10	21211000030001A		- Outer cover	2	
11	3049301002		- Bearing clip φ8*0.5	2	
12	21211000050001A		- Outer cover of front wheel bearing	2	
13	A26800408601	26800408601	Ball bearing	4	
14	21211000530001A		- Front wheel hub	2	
15	2121600002A	2121600002B	Water-proof rubber	2	
16	21211000540001A		- Front wheel cover	2	
17	3121601001		- Oil sealing ring	2	
18	21211000060001B	21211000060001A	Inner cover of front wheel bearing	4	
19	21211000040001A		- Inner cover of front wheel	4	
20	A26800100501	26800100501	ST screw 4*16	51	
21	2121300011A		- Front wheel axle(left)	1	
22	3051303001		- Washer 8	4	
23	21211000570001A		- Bearing block (left)	1	
24	2123400001A		- Oil bearing	2	
25	A26800900101	26800900101	Split washer	4	
26	21299000004B	21299000004A	Cylinder magnet	2	
27	21211000560001A		- Sliding part	2	
28	21211000550001A		- Link stopper	2	
29	21211000580001A		- Bearing block (right)	1	
30	2121300010A		- Front wheel axle(right)	1	
31	21241000464164A	21241000464174A	Outer Shell	1	
32	2124300003A		- Rotation shaft of charging contact plate	2	
33	2128300005A		- Charging contact plate(upper)	1	
34	2129200002A		- torsion spring	2	
35	21231000260103A		- Charging plate	1	
36	2128300004A		- Charging contact plate(lower)	1	
37	A26800103102	26800103102	ST screw	4	
38	21241000480120A		- Front protection cover	1	
39	2120200005B		- Inductive plate assembly	2	
40	21241000324161A		- Height adjustment display board	1	
41	21241000310001A		- Height adjustment pressing board	1	
42	21241000294163A		- Height adjustment knob	1	
43	21261000160001A		- Knob body	1	
44	21261000100002B		- Stop button	1	
45	2126100011A		- Display clamp	2	
46	2108900139B	2108900139A	PCB key	1	
47	3011301016		- ST screw 3*6	4	
48	2109800122A	26801126601	Spring	2	
49	A26800701001	26800701001	Flat washer	5	
50	2126300002C	2126300002B	Paddle	2	
51	21241000490001A		- Ultrasonic left supprot	1	
52	21241000500001A		- Ultrasonic right supprot	1	
53	21241000470121A		- Upper cover	1	
54	2109300058A		- ST screw	2	
55	2126600002A		- Rubber cover of stop switch	1	
56	A26800704601	26800704601	Flat washer	1	
57	2126900003A		- Stop switch	1	
58	2109200040A	26300143601	Pressing plate	2	
59	3011301009		- ST screw 4*12	9	
60	2123600001C	2123600001B	Strip seal of deck	1	
61	2126600001B	2126600001A	Sealing ring of tread sleeve	1	
62	21231000290001A		- Airtight box	1	
63	2128900079A		- Mother board	1	
64	2129600002C		- Rubber bushing	4	

in sketch	part number	other number of same part	part description	Qty	remarks
65	2123200002A		- Pressing plate	1	
66	2123300008A		- Clump weight	1	Passive weight. Do not order.
67	A26800700502	26800700502	Washer	3	
68	2128900022A		- Hall PCB ass'y	2	
69	2128900184A	2128900119A	Perimeter sensor detection plate	1	
70	2128900051B	2128900051A	USB plate	1	
71	2123600007A		- USB sealing element	1	
72	2128600004A		- USB sealing element	1	
73	2126900002A		- Rocker switch	1	
74	21231000230001A		- Deck	1	
75	2050100280A		- Cutting motor	1	
76	21291000250001B		- Thread sleeve	1	
77	21291000260001A		- Thread sleeve	1	
78	3022301010		- Screw M4*14	4	
79	21231000250001A		- Protection cover	1	
80	2125400001A		- Blade adaptor	1	
81	2125300012A		- Square hole washer	1	
82	3032306001	A26800502401	All metal hex locking nut M6	1	
83	21251000030001C		- Blade disk	1	
84	2125300010A		- Cutter cover	1	
85	3021302017		- Tooth screw M4*12	3	
86 - 87	ARM 3 BLA SET		- 3 blades & 3 screws	1	order at Daye Europe GmbH
88	2128600006A		- Sealing ring of battery	1	
89	21231000240001A		- Cover board of battery	1	
90	21231000210001A		- Guard plate	1	
91	A26800103502	26800103502	ST screw	4	
92	2120200014A		- Ultrasonic ass'y	1	
93	2128900086A		- Battery connector	1	
94	2128900009C	2128900009B	Switch stop connector	1	
95	2128900110A		- USB connector	1	
96	2128900085A		- Rain sensor connector	1	
97	2128900087A		- Charging contact plate connector	1	
98	2128900089A		- Perimeter connector	1	
99	2129900011B	2129900011B	FC connector	1	
100	2128900088A		- Obstruction sensor connector	1	
101	2128900105A		- Cutting motor connector	1	
102	2128900111A		- Perimeter sensor connector	1	
103	2128900090A		- Ultrasonic connector	1	
104	BA 573		- Battery	1	order at Daye Europe GmbH
105	2128100004A	2129100034A	Cable holder	10	
106	2013900094	29000400101	Nylon cable ties	12	
107	2129900044A		- Magnetic ring	1	
108 - 109	ARM 5 REP SET		- 5 m boundary wire, 5 cable connectors & 10 pegs	1	order at Daye Europe GmbH
108 - 109	ARM 100 EXT SET		- 100 m boundary wire, 5 cable connectors & 125 pegs	1	order at Daye Europe GmbH
110			keyboard sticker Silaro	1	Order with picture.
111	78509229701		- height adjustment logo	1	Needed on every disassembly of the robot. Order with picture. Similar, but not identic part has no. 78500974301.



in sketch	part number	other number of same part	part description	Qty	remarks
112			CMOS button cell CR 2032	1	



SEE US ON PAGES 100-101 OF THE MOWOX CATALOGUE



	DYMA230
	BC 230

in	part number	other number of same part	part description	Qty	remarks
1	3011301010	-	ST screw	8	
2	21291000280001A	21231000090001A	Base plate of charging station	1	
3	21291000330001A	-	Fixing nail	4	
4	2128100008B	2128100008A	Perimeter cable clamp	1	
5	2128100005A	-	Forced wire fixed head	2	
6	21231000060001B	21231000060001A	Front housing of charging station	1	
7	A26800102801	26800102801	ST screw	11	
8	21231000080001A	-	Cover of charging station	1	
9	3121602003	-	O-ring	1	
10	2128900024A	-	LED PCB	1	
11	2109300058A	-	ST screw	2	
12	2123600003B	2123600003A	Sealing ring of charging station	1	
13	3121602002	-	O-ring	2	
14	21231000100001B	-	Front sleeve of charging pin	2	
15	3121602001	-	O-ring	2	
16	2128200001B	-	Charing pin	2	
17	21231000110001A	-	Rear sleeve of charging pin	2	
18	3051303003	-	Flat washer	2	
19	2128900016B	2128900016C	Charging pin connector	1	
20	3031309003	-	Hex locking nut	2	
21	3011301016	-	ST screw	4	
22	2128900021B	2128900072A	Charging PCB	1	
23	2128900014C	-	LED connector	1	
24	2128900018C	-	Perimeter wire connector	1	
25	21231000070001D	21231000070001B	Rear housing of charging station	1	
26	2123900006A	-	Spring connection seat	1	
27	2129600012A	-	Waterproof buckle of charging statio	1	
28	21291000270001A	-	Waterproof cover	1	
29	2128900015B	-	Power supply cable connector	1	
30	2011300014	22900200801	Terminal block	1	
31	3011301017	-	ST screw	1	
32	2208100010A	25100102302	Cable pressing plate	1	
33	3011301009	-	ST screw	2	
34	2123900012A	2070100009A	Power supply cable assembly	1	
35	2070200021A	-	Charger	1	
36	2129100034A	2128100004A	Cable holder	2	
37	2013900094	29000400101	Nylon cable ties	1	
38	21291000300001A	-	back shroud of charging station	1	
39	2124600002A	-	Power cord buckle	1	
40	2129300010A	-	socket head wrench	1	